

## **MEDICAL BOARD OF CALIFORNIA**

DATE REPORT ISSUED: July 12, 2016  
 ATTENTION: Members, Medical Board of California (Board)  
 SUBJECT: Licensing Program Summary  
 STAFF CONTACT: Curtis J. Worden, Chief of Licensing

### STAFFING:

The Licensing Program staffing level during the fourth quarter was low due to staff being out of the office for unplanned leaves, and scheduled vacations. However, staff continued to work hard in the third quarter of fiscal year (FY) 2015-16 to meet the needs of applicants for physician's and surgeon's (P&S) licenses or postgraduate training authorization letters (PTAL), licensees and consumers.

Licensing currently has the following vacancies:

- Office Technician (Cashiering)
- Staff Services Analyst (IMG P&S Application Review)
- Associate Governmental Program Analyst (Senior Review)

Staff in training:

- 5 - Management Services Technicians (US/CAN P&S Application Review)
- 2 - Staff Services Analysts (IMG P&S Application Review)
- 1 - Staff Services Manager I

### STATISTICS:

The statistics are on pages BRD 7C-3 through BRD 7C-10. Please note that a few of the statistics normally provided are unavailable at this time due to the unavailability of reports in the BreEZe system. The statistics that have been provided have been obtained from the call center phone system, tracked manually, or from the BreEZe system.

Notable statistics include:

- Consumer Information Unit telephone calls answered: 19,385
  - 266 less calls answered than the previous quarter
- Consumer Information Unit telephone calls abandoned: 8,395
  - 2,390 more abandon calls than the previous quarter
- Consumer Information Unit telephone calls requesting a call back: 8,498
  - 2,788 more call back requests than the previous quarter

Note: The phone system was down for several hours one day and another day several call center staff were out unexpectedly.

- P&S applications initial review completed: 2,165
  - 263 more applications reviewed than the previous quarter
- P&S licenses issued: 1,938
  - 222 more licenses issued than the previous quarter
- P&S applications received in FY 2015-16: 7,763
  - 913 more than FY 2014-15

- P&S licenses issued in FY 2015-16: 6,316
  - 443 more than FY 2014-15

Licensing did not meet its goal of performing initial reviews of all new P&S applications within 45 days of receipt by the Board for 6 weeks out of the 13 weeks in the fourth quarter of FY 2015-16. 11 days was the highest number of days over the initial review goal.

#### INTERNATIONAL MEDICAL SCHOOLS:

The statistics for the international medical school reviews are on page BRD 7C-5.

The review of international medical schools continues to be a significant workload for the Board. The Board received one new Self-Assessment Report and there are currently seven Self-Assessment Reports that are pending. Board staff conducted the site visit at Universidad Iberoamericana School of Medicine (UNIBE) in May and June 2016. UNIBE representative(s) plan to attend the Board meeting to be available to the Members during the Board's consideration of UNIBE's request for recognition.

#### SPECIALTY BOARD APPLICATIONS:

The Board has one pending application from a specialty board requesting approval by the Board.

#### OUTREACH:

The Licensing Outreach Manager has attended the following licensing workshops and when appropriate, residents from affiliated hospitals are invited to attend.

#### License Fairs:

April 6:	Mercy Merced: 6 residents
	Kaweah Delta (Visalia): 35 residents
April 7:	UCSF Fresno: 45 residents
April 19:	Kaiser Ontario: 15 residents
April 20:	UCLA: 50 residents
April 27:	Children's Hospital Oakland: 45 residents

The Board does not conduct license fairs in May or June.

#### Resident Orientation:

June 15:	St Mary's SF: 40 residents
June 17:	UCSF Day 1: 150 residents
June 20:	UCI Day 1: 125 residents
June 21:	UCLA Day 1: 150 residents
June 22:	UCR: 40 residents
June 27:	Loma Linda Day 1: 150 residents
	California Hospital (LA): 8 residents
June 30:	UCSF Day 2: 100 residents

**CONSUMER INFORMATION UNIT FY 15/16**

	FY 15/16	Q1	Q2	Q3	Q4
Total Calls Answered	<b>77,532</b>	19,692	18,804	19,651	19,385
Calls Requesting Call Back	<b>32,727</b>	12,788	5,731	5,710	8,498
Calls Abandoned	<b>27,687</b>	8,913	4,374	6,005	8,395
Address Changes Completed	<b>4,363</b>	1,438	950	969	1,006

**CONSUMER INFORMATION UNIT FY 14/15**

	FY 14/15	Q1	Q2	Q3	Q4
Total Calls Answered	<b>78,260</b>	22,092	17,177	19,034	19,957
Calls Requesting Call Back	<b>42,728</b>	11,376	9,081	12,358	9,913
Calls Abandoned	<b>34,104</b>	9,204	7,193	10,087	7,620
Address Changes Completed	<b>12,063</b>	5,231	3,369	2,235	1,228

**PHYSICIAN & SURGEON DATA FY 15/16**

	FY 15/16	Q1	Q2	Q3	Q4
Applications Received	<b>7,763</b>	2,262	1,732	2,094	1,675
Initial Reviews Completed	<b>7,687</b>	1,645	1,975	1,902	2,165
Total Pending	<b>N/A</b>				
Reviewed	<b>N/A</b>				
Not Reviewed	<b>N/A</b>				
(SR2s Pending)	<b>N/A</b>	35	38	51	53
Licenses Issued	<b>6,316</b>	1,237	1,425	1,716	1,938
Renewals Issued	<b>66,778</b>	17,123	16,237	16,712	16,706

**PHYSICIAN & SURGEON DATA FY 14/15**

	FY 14/15	Q1	Q2	Q3	Q4
Applications Received	<b>6,850</b>			1,967	1,516
Initial Reviews Completed	<b>N/A</b>				
Total Pending	<b>N/A</b>				
Reviewed	<b>N/A</b>				
Not Reviewed	<b>N/A</b>				
(SR2s Pending)	<b>N/A</b>			16	21
Licenses Issued	<b>5,873</b>	1,222	1,243	1,391	2,017
Renewals Issued	<b>33,341</b>			16,675	16,666

<b>Unrecognized and Disapproved Medical School Applicants (2135.7) - FY 15/16</b>					
	<b>FY 15/16</b>	<b>Q1</b>	<b>Q2</b>	<b>Q3</b>	<b>Q4</b>
Beginning	<b>N/A</b>	7	9	5	4
Received	<b>5</b>	4	0	1	0
Reviewed	<b>5</b>	4	0	1	0
Not Eligible	<b>0</b>	0	0	0	0
Licensed	<b>8</b>	2	4	2	0

<b>Unrecognized and Disapproved Medical School Applicants (2135.7) - FY 14/15</b>					
	<b>FY 14/15</b>	<b>Q1</b>	<b>Q2</b>	<b>Q3</b>	<b>Q4</b>
Received	<b>6</b>	3	0	2	1
Reviewed	<b>8</b>	2	1	2	3
Not Eligible	<b>0</b>	0	0	0	0
Licensed	<b>0</b>	0	0	0	0

<b>SR 2 - CATEGORIES FY 15/16</b>					
	<b>FY 15/16</b>	<b>Q1</b>	<b>Q2</b>	<b>Q3</b>	<b>Q4</b>
Alcohol/Drugs	<b>29</b>	7	8	10	4
PG/Medical Knowledge	<b>61</b>	16	23	16	6
Convictions	<b>41</b>	17	8	11	5
Other	<b>128</b>	31	32	31	34

<b>SR 2 - CATEGORIES FY 14/15</b>					
	<b>FY 14/15</b>	<b>Q1</b>	<b>Q2</b>	<b>Q3</b>	<b>Q4</b>
Alcohol/Drugs	<b>33</b>	10	4	14	5
PG/Medical Knowledge	<b>105</b>	42	19	25	19
Convictions	<b>39</b>	14	10	7	8
Other	<b>112</b>	34	29	24	25

INTERNATIONAL MEDICAL SCHOOL APPLICATIONS FY 15/16					
	FY 15/16	Q1	Q2	Q3	Q4
Schools Pending Recognition at Beginning of Quarter	N/A	107	114	123	122
Pending Self-Assessment Reports (included above)	N/A	7	7	7	7
New Self-Assessment Reports Received	1	0	0	0	1
New Unrecognized Schools Received	45	13	13	7	12
School Recognized Pursuant to CCR 1314(a)(1)	29	6	4	8	11
School Recognized Pursuant to CCR 1314(a)(2)	0	0	0	0	0
TOTAL Schools Pending Recognition at End of Quarter	N/A	114	123	122	124

INTERNATIONAL MEDICAL SCHOOL APPLICATIONS FY 14/15					
	FY 14/15	Q1	Q2	Q3	Q4
Schools Pending Recognition at Beginning of Quarter	N/A	101	106	102	111
Pending Self-Assessment Reports (included above)	N/A	6	7	7	7
New Self-Assessment Reports Received	1	1	0	0	0
New Unrecognized Schools Received	59	22	12	16	9
School Recognized Pursuant to CCR 1314(a)(1)	54	18	16	7	13
School Recognized Pursuant to CCR 1314(a)(2)	0	0	0	0	0
TOTAL Schools Pending Recognition at End of Quarter	N/A	106	102	111	107

\*Three CCR 1314.1(a)(2) school files were closed due to lack of response to the Board's requests for information.

SPECIALTY BOARD APPLICATIONS FY 15/16					
	FY 15/16	Q1	Q2	Q3	Q4
Applications Received	1	0	1	0	0
Applications Pending	N/A	0	1	1	1

SPECIALTY BOARD APPLICATIONS FY 14/15					
	FY 14/15	Q1	Q2	Q3	Q4
Applications Received	0	0	0	0	0
Applications Pending	N/A	1	1	1	1

RESEARCH PSYCHOANALYST FY 15/16					
	FY 15/16	Q1	Q2	Q3	Q4
RP Applications Received	6	1	2	3	0
RP Licenses Issued	9	3	1	4	1

RESEARCH PSYCHOANALYST FY 14/15					
	FY 14/15	Q1	Q2	Q3	Q4
RP Applications Received	12	4	2	2	4
RP Licenses Issued	3	1	0	2	0

<b>LICENSED MIDWIVES FY 15/16</b>					
	<b>FY 15/16</b>	<b>Q1</b>	<b>Q2</b>	<b>Q3</b>	<b>Q4</b>
Applications Received	<b>26</b>	5	4	12	5
Applications Pending	<b>N/A</b>	2	3	1	2
Applications Withdrawn	<b>1</b>	1	0	0	0
Licenses Issued	<b>29</b>	8	3	14	4
Licenses Renewed	<b>170</b>	37	43	50	40

<b>LICENSED MIDWIVES FY 14/15</b>					
	<b>FY 14/15</b>	<b>Q1</b>	<b>Q2</b>	<b>Q3</b>	<b>Q4</b>
Applications Received	<b>45</b>	3	20	16	6
Applications Pending	<b>N/A</b>	2	7	10	6
Applications Withdrawn	<b>1</b>	0	1	0	0
Licenses Issued	<b>42</b>	5	14	13	10
Licenses Renewed	<b>153</b>	43	39	29	42

<b>FICTITIOUS NAME PERMITS FY 15/16</b>					
	<b>FY 15/16</b>	<b>Q1</b>	<b>Q2</b>	<b>Q3</b>	<b>Q4</b>
P&S - FNP Received	<b>1289</b>	375	295	318	301
P&S - FNP Issued	<b>1,243</b>	324	268	337	314
P&S - FNP Pending	<b>N/A</b>	N/A	N/A	N/A	N/A
P&S - FNP Renewed	<b>5,104</b>	1,337	1,121	1,357	1,289
Podiatric FNP Received	<b>18</b>	6	7	1	4
Podiatric FNP Issued	<b>26</b>	6	9	6	5
Podiatric FNP Pending	<b>N/A</b>	N/A	N/A	N/A	N/A
Podiatric FNP Renewed	<b>156</b>	36	35	44	41

<b>FICTITIOUS NAME PERMITS FY 14/15</b>					
	<b>FY 14/15</b>	<b>Q1</b>	<b>Q2</b>	<b>Q3</b>	<b>Q4</b>
P&S - FNP Received	<b>N/A</b>			322	364
P&S - FNP Issued	<b>N/A</b>			255	339
P&S - FNP Pending	<b>N/A</b>			N/A	N/A
P&S - FNP Renewed	<b>N/A</b>			1,371	1,319
Podiatric FNP Received	<b>N/A</b>			5	9
Podiatric FNP Issued	<b>N/A</b>			7	4
Podiatric FNP Pending	<b>N/A</b>			N/A	N/A
Podiatric FNP Renewed	<b>N/A</b>			30	37

<b>POLYSOMNOGRAPHY FY 15/16</b>					
	<b>FY 15/16</b>	<b>Q1</b>	<b>Q2</b>	<b>Q3</b>	<b>Q4</b>
<b>Trainee</b>					
Applications Received	5	N/A	N/A	N/A	5
Registrations Issued	7	N/A	N/A	N/A	7
Registrations Renewed	1	N/A	N/A	N/A	1
<b>Technician</b>					
Applications Received	5	N/A	N/A	N/A	5
Registrations Issued	7	N/A	N/A	N/A	7
Registrations Renewed	5	N/A	N/A	N/A	5
<b>Technologist</b>					
Applications Received	11	N/A	N/A	N/A	11
Registrations Issued	12	N/A	N/A	N/A	12
Registrations Renewed	11	N/A	N/A	N/A	11

<b>OPTICAL REGISTRATIONS FY 15/16</b>					
	<b>FY 15/16</b>	<b>Q1</b>	<b>Q2</b>	<b>Q3 *</b>	<b>Q4 *</b>
RDO - Business Registrations Issued	38	18	20		
RDO - Pending Applications Business	N/A	15	16		
CLS - Out-of-State - Business Registrations Issued	0	0	0		
CLS - Pending Out of State Applications -Business	2	1	1		
Spectacle Lens Registrations Issued	138	62	76		
Spectacle Lens - Pending Applications	N/A	26	31		
Contact Lens Registrations Issued	36	15	21		
Contact Lens - Pending Applications	N/A	5	6		
Spectacle Lens Registrations Renewed	462	214	248		
Contact Lens Registrations Renewed	199	93	106		

<b>OPTICAL REGISTRATIONS FY 14/15</b>					
	<b>FY 14/15</b>	<b>Q1</b>	<b>Q2</b>	<b>Q3</b>	<b>Q4</b>
RDO - Business Registrations Issued	N/A			17	13
RDO - Pending Applications Business	N/A			14	26
CLS - Out-of-State - Business Registrations Issued	N/A			0	0
CLS - Pending Out of State Applications -Business	N/A			1	1
Spectacle Lens Registrations Issued	N/A			62	62
Spectacle Lens - Pending Applications	N/A			45	35
Contact Lens Registrations Issued	N/A			18	26
Contact Lens - Pending Applications	N/A			13	5
Spectacle Lens Registrations Renewed	N/A			239	287
Contact Lens Registrations Renewed	N/A			111	130

\* Pursuant to: AB 684 (Alejo, Chapter 405): Effective January 1, 2016

The Registered Dispensing Program was transferred to the California State Board of Optometry

**SPECIAL PROGRAMS**  
**FY 15/16**

Permit	Applications Received				Applications Reviewed				Permits Issued				Permits Renewed				Total Pending				Applications Withdrawn or Denied			
	Q1	Q2	Q3	Q4	Q1	Q2	Q3	Q4	Q1	Q2	Q3	Q4	Q1	Q2	Q3	Q4	Q1	Q2	Q3	Q4	Q1	Q2	Q3	Q4
2111	22	3	6	7	13	12	5	7	14	11	8	4	14	6	11	9	17	9	7	10	0	0	0	0
2112	1	1	0	1	1	1	0	0	0	1	0	0	0	0	0	1	1	1	1	2	0	0	0	0
2113	6	6	12	7	4	4	8	8	5	10	4	5	18	10	10	9	15	11	19	21	0	0	0	0
2168	0	2	0	1	0	2	0	0	2	0	1	0	2	2	2	2	0	2	1	2	0	0	0	0
2072	0	0	0	0	0	0	0	0	0	0	0	0	0	0	0	0	0	0	0	0	0	0	0	0
1327	0	0	0	0	0	0	0	0	0	0	0	0	0	0	0	1	0	0	0	0	0	0	0	0

**SPECIAL PROGRAMS**  
**FY 14/15**

Permit	Applications Received				Reviewed				Permits Issued				Permits Renewed				Total Pending				Applications Withdrawn or			
	Q1	Q2	Q3	Q4	Q1	Q2	Q3	Q4	Q1	Q2	Q3	Q4	Q1	Q2	Q3	Q4	Q1	Q2	Q3	Q4	Q1	Q2	Q3	Q4
2111	18	10	3	6	16	12	7	6	12	11	10	4	11	13	3	6	15	14	7	9	0	0	0	0
2112	0	0	1	0	0	0	0	1	1	1	0	1	0	0	0	0	1	0	1	0	0	0	0	0
2113	1	3	6	6	11	3	4	8	8	9	4	5	21	12	7	12	17	11	13	14	0	0	0	0
2168	0	2	0	0	2	2	0	0	0	0	3	0	4	3	1	4	3	5	2	2	0	0	0	0
2072	0	0	0	0	0	0	0	0	0	0	0	0	0	0	0	0	0	0	0	0	0	0	0	0
1327	0	0	0	0	0	0	0	0	0	0	0	0	0	1	0	1	0	0	0	0	0	0	0	0

2111 - Visiting Fellow (doesn't satisfy postgraduate training required for licensure)

2112 - Hospital Fellowship Program Non-Citizen (does not satisfy postgraduate training required for licensure)

2113 - Medical School Faculty Member (may satisfy postgraduate training required for licensure)

2168 - Special Faculty Permit (academically eminent; unrestricted practice within sponsoring medical school - not eligible for licensure)

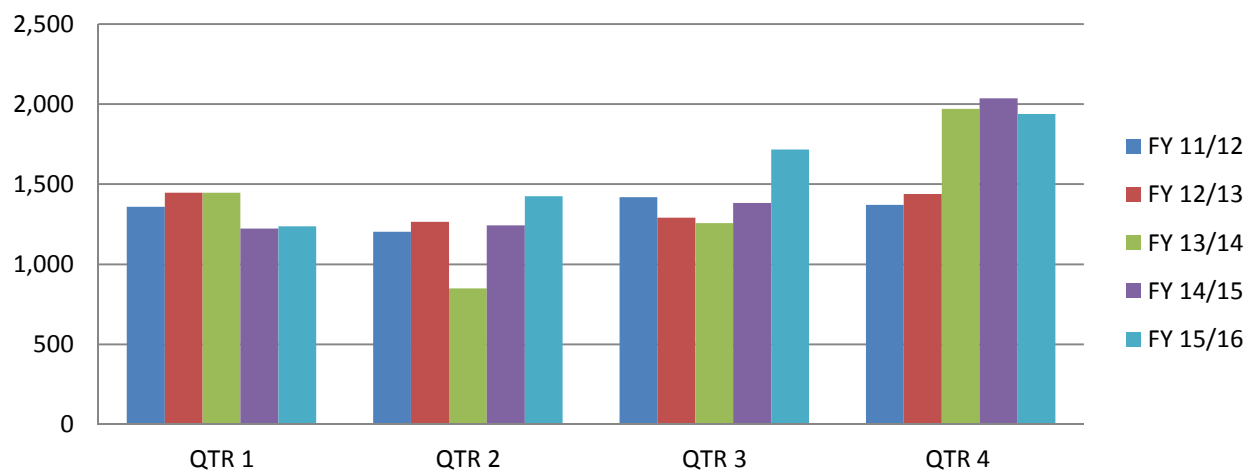
2072 - Special Permit - Correctional Facility

1327 - Medical Student Rotations - Non-ACGME Hospital Rotation

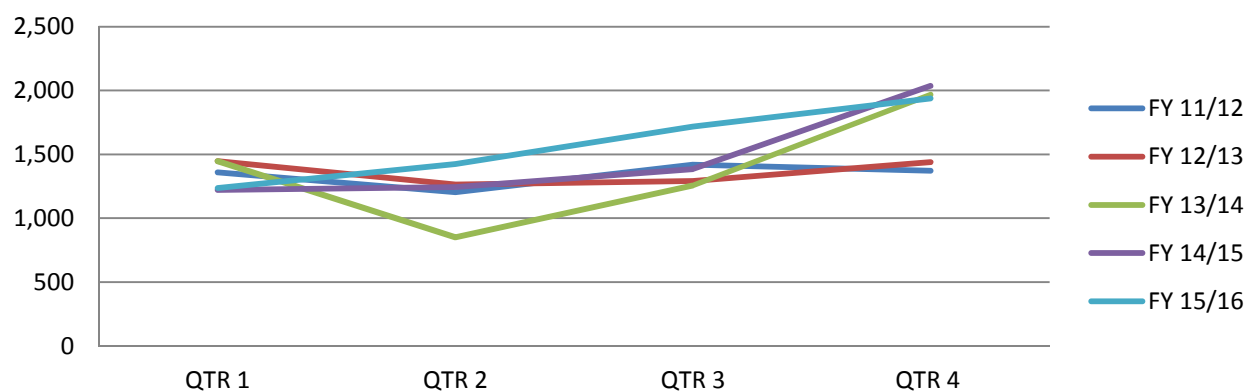


PHYSICIAN'S AND SURGEON'S LICENSES ISSUED Five Fiscal Year History					
Fiscal Year	QTR 1	QTR 2	QTR 3	QTR 4	TOTAL
FY 15/16	1,237	1,425	1,716	1,938	<b>6,316</b>
FY 14/15	1,222	1,243	1,383	2,035	<b>5,883</b>
FY 13/14	1,447	849	1,257	1,969	<b>5,522</b>
FY 12/13	1,447	1,264	1,291	1,438	<b>5,440</b>
FY 11/12	1,358	1,203	1,419	1,371	<b>5,351</b>

### LICENSES ISSUED



### LICENSES ISSUED



*PHYSICIAN'S AND SURGEON'S LICENSE AND PTAL APPLICATIONS RECEIVED Five Fiscal Year History					
Fiscal Year	QTR 1	QTR 2	QTR 3	QTR 4	TOTAL
FY 15/16	2,262	1,732	2,094	1,675	7,763
FY 14/15			1,967	1,516	6,850
FY 13/14					6,308
FY 12/13	1,722	1,715	1,708	1,552	6,697
FY 11/12	1,711	1,666	1,862	1,390	6,629

**Fiscal Year - 2015/2016**

Strategic Plan Goal 5: Organizational Effectiveness Objective 5.1: Licensing Applications to be Reviewed Within 45 Days					
	FY 15/16	Q1	Q2	Q3	Q4
Number of Weeks 45 Day Initial Review Goal Not Met	38	10	9	13	6
Number of Weeks	52	13	13	13	13
Highest # of Days Goal Exceeded	N/A	19	23	13	11

**Fiscal Year - 2014/2015**

Strategic Plan Goal 5: Organizational Effectiveness Objective 5.1: Licensing Applications to be Reviewed Within 45 Days					
	FY 14/15	Q1	Q2	Q3	Q4
Number of Weeks 45 Day Initial Review Goal Not Met	17	0	3	9	5
Number of Weeks	52	13	13	13	13
Highest # of Days Goal Exceeded	N/A	0	10	12	12