

DATE REPORT ISSUED: October 10, 2013  
DEPARTMENT: Medical Board of California  
SUBJECT: Executive Summary-Enforcement  
STAFF CONTACT: A. Renee Threadgill,  
Chief of Enforcement

Program Update:

The third presentation of the Expert Reviewer training will be held November 2, 2013, on the campus of the University of California, San Diego Medical School in La Jolla. The training will begin at 8:30 a.m. and is scheduled to conclude at 5:00 p.m. Attendees will receive eight hours of continuing medical education credit. Members are welcome to attend this outstanding training experience.

There are currently 936 active experts on the list. 336 experts were utilized to review 641 cases calendar year to date. Attachment A includes the Expert Reviewer Program statistics. Additional experts are needed in the following specialties:

- Pain Medicine
- Addiction Medicine
- Psychiatry

The Enforcement program continues to work with the Administrative Law Judges to provide training regarding medical-related topics. In September Dr. Nuovo provided part I of an Anatomy and Physiology presentation (Part II will continue in November).

There are currently seven sworn investigator vacancies, which equates to an 8% vacancy rate. However, five individuals are in background for those positions, thus the vacancy rate is reduced to 4%. There are two supervising investigator vacancies, which is a 10% vacancy rate for this classification. The overall vacancy rate for sworn positions is 9% or 5%, if the vacancies with candidates in background are included. Five newly hired investigators are attending the Specialized Basic Academy in Orange County. They are scheduled to complete the Academy on December 12, 2013.

The Central Complaint Unit received 7,460 complaints in fiscal year 2012/2013. This is 537 more complaints than received in the previous fiscal year. The average/median Complaint Unit processing time was reduced from 83/64 days in fiscal year 2011/2012 to 67/54 days in fiscal year 2012/2013.

Statistical data is provided in Attachment B. This data reflects the following improvements when comparing fiscal year 2011/2012 to fiscal year 2012/2013:

- Average number of days from the complaint received by the Board to complaint closed or sent to investigation decreased by 23 days;
- Average days from receipt of complaint, to investigation, to case closed or referred for action decreased by 106 days; and
- The number of suspension orders increased from 74 to 78.

**Medical Board of California  
Expert Reviewer Program Report**

**Attachment A**

**CASES BY SPECIALTY SENT FOR REVIEW  
USE OF EXPERTS BY SPECIALTY  
ACTIVE LIST EXPERTS BY SPECIALTY**

October 1, 2013

<b>SPECIALTY</b>	<b>Number of cases reviewed/ sent to Experts (Jan-Sep, 2013)</b>	<b>Number of Experts Utilized (Jan-Sep, 2013)</b>	<b>Active List Experts 936</b>
<i>ADDICTION</i>	11	<b>7 EXPERTS</b> 4 LIST EXPERTS REVIEWED 1 CASE 2 LIST EXPERTS REVIEWED 2 CASES 1 LIST EXPERT REVIEWED 3 CASES	16 ↑
ALLERGY & IMMUNOLOGY (A&I)			4
ANESTHESIOLOGY (Anes)	12	<b>14 EXPERTS</b> 13 LIST EXPERTS REVIEWED 1 CASE 1 LIST EXPERT REVIEWED 2 CASES	69 ↑
COLON & RECTAL SURGERY (CRS)	5	<b>2 EXPERTS</b> 1 LIST EXPERT REVIEWED 1 CASE 1 LIST EXPERT REVIEWED 4 CASES	3
<i>COMPLEMENTARY/ALTERNATIVE MEDICINE</i>	18	<b>10 EXPERTS</b> 6 LIST EXPERTS REVIEWED 1 CASE 2 LIST EXPERTS REVIEWED 2 CASES 2 LIST EXPERTS REVIEWED 4 CASES	21↑
<i>CORRECTIONAL MEDICINE</i>	1	<b>1 EXPERT</b> 1 LIST EXPERT	28 ↑
DERMATOLOGY (D)	1	<b>1 EXPERT</b> 1 LIST EXPERT	10
EMERGENCY (EM)	17	<b>13 EXPERTS</b> 8 LIST EXPERTS REVIEWED 1 CASE 4 LIST EXPERTS REVIEWED 2 CASES 1 LIST EXPERT REVIEWED 3 CASES	49
FAMILY (FM)  *involved companion cases and included physical evaluations	87	<b>41 EXPERTS</b> 20 LIST EXPERTS REVIEWED 1 CASE 10 LIST EXPERTS REVIEWED 2 CASES 2 LIST EXPERTS REVIEWED 3 CASES 3 LIST EXPERT REVIEWED 4 CASES 1 LIST EXPERT REVIEWED 5 CASES* 2 LIST EXPERTS REVIEWED 6 CASES* 2 LIST EXPERT REVIEWED 8 CASES* 1 LIST EXPERT REVIEWED 9 CASES*	74

**Medical Board of California  
Expert Reviewer Program Report**

**Attachment A**

**CASES BY SPECIALTY SENT FOR REVIEW  
USE OF EXPERTS BY SPECIALTY  
ACTIVE LIST EXPERTS BY SPECIALTY  
October 1, 2013**

<b>SPECIALTY</b>	<b>Number of cases reviewed/ sent to Experts (Jan-Sep, 2013)</b>	<b>Number of Experts Utilized (Jan-Sep, 2013)</b>	<b>Active List Experts 936</b>
INTERNAL (General Internal Med)  *companion cases and included physical evaluations	71	<b>43 EXPERTS</b> 32 LIST EXPERTS REVIEWED 1 CASE 1 LIST EXPERT REVIEWED 2 CASES 5 LIST EXPERTS REVIEWED 3 CASES 1 LIST EXPERT REVIEWED 4 CASES 2 LIST EXPERTS REVIEWED 5 CASES* 2 LIST EXPERTS REVIEWED 9 CASES*	183 ↑
Cardiovascular Disease (Cv)	13	<b>9 EXPERTS</b> 4 LIST EXPERTS REVIEWED 1 CASE 3 LIST EXPERTS REVIEWED 2 CASES 2 LIST EXPERTS REVIEWED 3 CASES	32 ↑
Gastroenterology (Ge)	7	<b>7 EXPERTS</b> 6 LIST EXPERTS REVIEWED 1 CASE 1 LIST EXPERT REVIEWED 2 CASES	19 ↑
Medical Oncology (Onc)	4	<b>3 EXPERTS</b> 2 LIST EXPERTS REVIEWED 1 CASE 1 LIST EXPERT REVIEWED 2 CASES	11
Nephrology (Nep)	1	<b>1 EXPERT</b> 1 LIST EXPERT	7 ↓
Rheumatology (Rhu)	1	<b>1 EXPERT</b> 1 LIST EXPERT	8
MIDWIFE REVIEWER	1	<b>1 EXPERT</b> 1 LIST EXPERT	6
NEUROLOGICAL SURGERY (NS)	13	<b>5 EXPERTS</b> 3 LIST EXPERTS REVIEWED 2 CASES 1 LIST EXPERT REVIEWED 3 CASES 1 LIST EXPERT REVIEWED 5 CASES	10 ↑
NEUROLOGY (N)	15	<b>9 EXPERTS</b> 4 LIST EXPERTS REVIEWED 1 CASE 4 LIST EXPERTS REVIEWED 2 CASES 1 LIST EXPERT REVIEWED 3 CASES	25 ↓
NEUROLOGY with Special Qualifications in Child Neurology (N/ChiN)			2

**Medical Board of California  
Expert Reviewer Program Report**

**Attachment A**

**CASES BY SPECIALTY SENT FOR REVIEW  
USE OF EXPERTS BY SPECIALTY  
ACTIVE LIST EXPERTS BY SPECIALTY  
October 1, 2013**

<b>SPECIALTY</b>	<b>Number of cases reviewed/ sent to Experts (Jan-Sep, 2013)</b>	<b>Number of Experts Utilized (Jan-Sep, 2013)</b>	<b>Active List Experts 936</b>
NUCLEAR MEDICINE (NuM)			5
OBSTETRICS & GYNECOLOGY (ObG)  *short list of reviewers	49	<b>29 EXPERTS</b> 16 LIST EXPERTS REVIEWED 1 CASE 6 LIST EXPERTS REVIEWED 2 CASES 3 LIST EXPERTS REVIEWED 3 CASES 1 LIST EXPERT REVIEWED 4 CASES 1 LIST EXPERT REVIEWED 5 CASES 2 LIST EXPERTS REVIEWED 7 CASES*	76 ↓
<i>OCCUPATIONAL MEDICINE</i>	2	<b>1 EXPERT</b> 1 LIST EXPERT REVIEWED 2 CASES	9
OPHTHALMOLOGY (Oph)  *involved companion cases	14	<b>9 EXPERTS</b> 6 LIST EXPERTS REVIEWED 1 CASE 1 LIST EXPERT REVIEWED 2 CASES 1 LIST EXPERT REVIEWED 3 CASES 1 LIST EXPERT REVIEWED 6 CASES*	31 ↓
<i>ORAL &amp; MAXILLOFACIAL SURGERY</i>	1	<b>1 EXPERT</b> LIST EXPERT	1
ORTHOPAEDIC SURGERY (OrS)	14	<b>11 EXPERTS</b> 8 LIST EXPERTS REVIEWED 1 CASE 2 LIST EXPERTS REVIEWED 2 CASES 1 LIST EXPERT REVIEWED 3 CASES	24 ↓
OTOLARYNGOLOGY (Oto)	2	<b>2 EXPERTS</b> 2 LIST EXPERTS REVIEWED 1 CASE	19 ↓
PAIN MEDICINE (PM)  *short list of reviewers	55	<b>19 EXPERTS</b> 7 LIST EXPERTS REVIEWED 1 CASE 3 LIST EXPERTS REVIEWED 2 CASES 1 LIST EXPERT REVIEWED 3 CASES 3 LIST EXPERTS REVIEWED 4 CASES 1 LIST EXPERT REVIEWED 5 CASES* 3 LIST EXPERTS REVIEWED 6 CASES* 1 LIST EXPERT REVIEWED 7 CASES*	22 ↑

**Medical Board of California  
Expert Reviewer Program Report**

**Attachment A**

**CASES BY SPECIALTY SENT FOR REVIEW  
USE OF EXPERTS BY SPECIALTY  
ACTIVE LIST EXPERTS BY SPECIALTY**

October 1, 2013

<b>SPECIALTY</b>	<b>Number of cases reviewed/ sent to Experts (Jan-Sep, 2013)</b>	<b>Number of Experts Utilized (Jan-Sep, 2013)</b>	<b>Active List Experts 936</b>
PATHOLOGY (Path)	5	<b>3 EXPERTS</b> 2 LIST EXPERTS REVIEWED 1 CASE 1 LIST EXPERT REVIEWED 3 CASES	9
PEDIATRICS (Ped)	8	<b>8 EXPERTS</b> 5 LIST EXPERTS REVIEWED 1 CASE 2 LIST EXPERTS REVIEWED 2 CASES 1 LIST EXPERT REVIEWED 3 CASES	46 ↓
PHYSICAL MEDICINE & REHABILITATION (PMR)	2	<b>2 EXPERTS</b> 2 LIST EXPERTS REVIEWED 1 CASE	10
PLASTIC SURGERY (PIS)  *involved companion cases	26	<b>13 EXPERTS</b> 7 LIST EXPERTS REVIEWED 1 CASE 2 LIST EXPERTS REVIEWED 2 CASES 1 LIST EXPERT REVIEWED 3 CASES 2 LIST EXPERTS REVIEWED 4 CASES 1 LIST EXPERT REVIEWED 6 CASES*	50 ↑
PSYCHIATRY (Psyc)  *included case reviews, evaluations and preparation/testimony (of cases previously reviewed)	101	<b>48 EXPERTS</b> 24 LIST EXPERTS REVIEWED 1 CASE 7 LIST EXPERTS REVIEWED 2 CASES 9 LIST EXPERT REVIEWED 3 CASES 3 LIST EXPERTS REVIEWED 4 CASES 2 LIST EXPERTS REVIEWED 5 CASES* 2 LIST EXPERTS REVIEWED 7 CASES* 1 LIST EXPERT REVIEWED 8 CASES*	81
RADIOLOGY (Rad)	8	<b>7 EXPERTS</b> 6 LIST EXPERTS REVIEWED 1 CASE 1 LIST EXPERT REVIEWED 2 CASES	35 ↑
<i>RADIATION ONCOLOGY</i>	2	<b>1 EXPERT</b> 1 LIST EXPERT REVIEWED 2 CASES	4
SLEEP MEDICINE (S)			8
SURGERY (S)	29	<b>21 EXPERTS</b> 14 LIST EXPERTS REVIEWED 1 CASE 6 LIST EXPERTS REVIEWED 2 CASES 1 LIST EXPERT REVIEWED 3 CASES	43

**Medical Board of California  
Expert Reviewer Program Report**

**Attachment A**

**CASES BY SPECIALTY SENT FOR REVIEW  
USE OF EXPERTS BY SPECIALTY  
ACTIVE LIST EXPERTS BY SPECIALTY**  
October 1, 2013

<b>SPECIALTY</b>	<b>Number of cases reviewed/ sent to Experts (Jan-Sep, 2013)</b>	<b>Number of Experts Utilized (Jan-Sep, 2013)</b>	<b>Active List Experts 936</b>
------------------	--	---	------------------------------------

Vascular Surgery (VascS)	2	<b>1 EXPERT</b> 1 LIST EXPERT REVIEWED 2 CASES	8 ↓
THORACIC SURGERY (TS)	4	<b>3 EXPERTS</b> 2 LIST EXPERTS REVIEWED 1 CASE 1 LIST EXPERT REVIEWED 2 CASES	16 ↑
<i>(MEDICAL) TOXICOLOGY</i>	1	<b>1 EXPERT</b> 1 LIST EXPERT	3
UROLOGY (U)  *short list of reviewers	17	<b>8 EXPERTS</b> 3 LIST EXPERTS REVIEWED 1 CASE 3 LIST EXPERTS REVIEWED 2 CASES 1 LIST EXPERT REVIEWED 4 CASES 1 LIST EXPERT REVIEWED 5 CASES*	17 ↑

TOTAL CASES SENT: Calendar Year to date (end of 3 <sup>rd</sup> Quarter)	<b>641</b>
TOTAL LIST EXPERTS UTILIZED: Calendar Year to date (end of 3 <sup>rd</sup> Quarter)	<b>336</b>
TOTAL ACTIVE LIST EXPERTS	<b>936</b>

/susan (10/1/13)

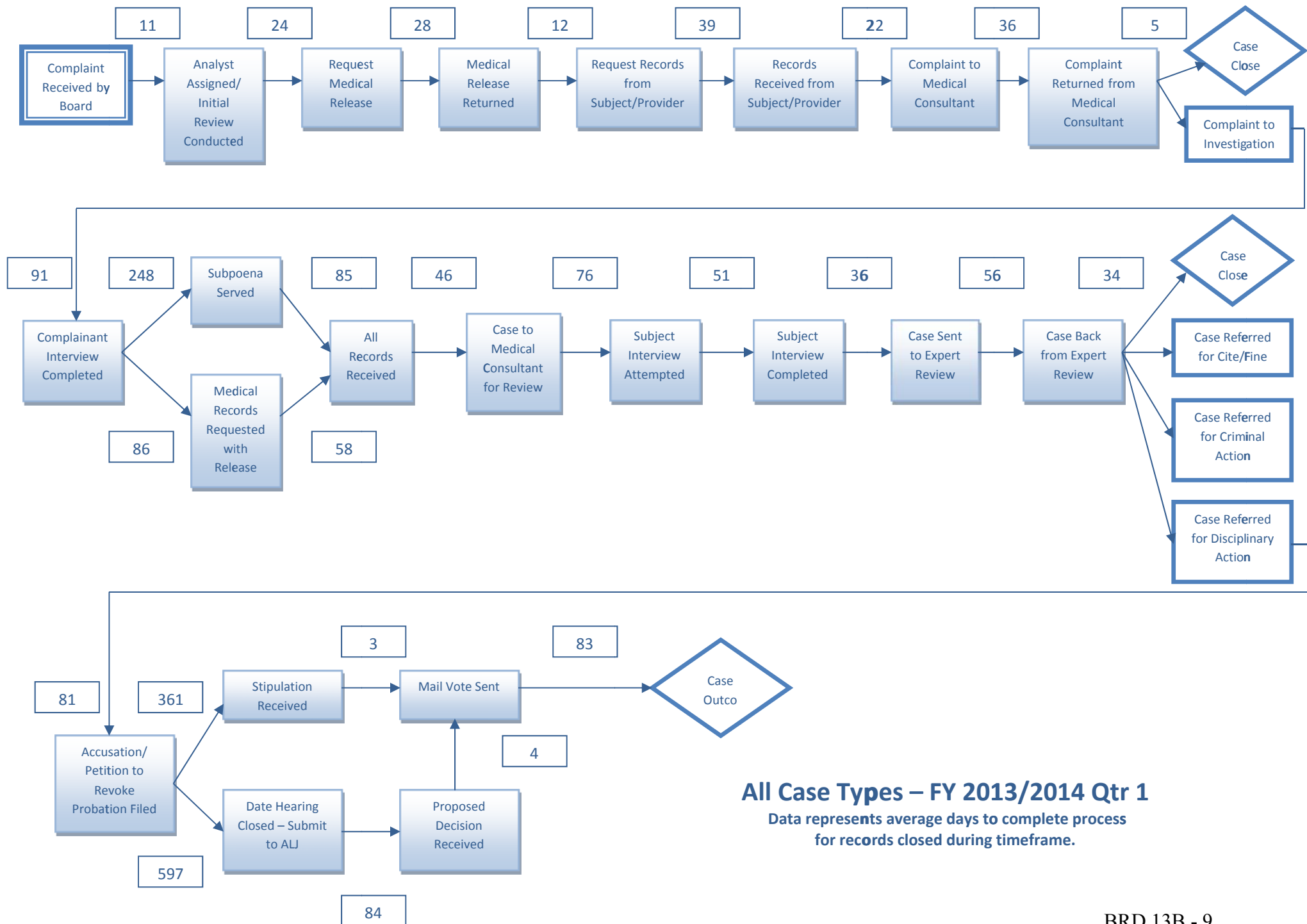
**Enforcement Data Markers**  
**All Case Types**

Data represents average days to complete Complaint and Investigation processes for records closed during reported time frames.	FY 2008/2009		FY 2009/2010		FY 2010/2011		FY 2011/2012		FY 2012/2013		FY 2013/2014 1st Qtr	
	Average Days	Number of Records	Average Days	Number of Records	Average Days	Number of Records	Average Days	Number of Records	Average Days	Number of Records	Average Days	Number of Records
<b>Complaint Processes</b>												
Complaint Received by Board → Analyst Assigned/Initial Review Conducted	10	6761	11	6869	9	7513	12	7699	9	7929	11	1980
Analyst Assigned/Initial Review Conducted → Request Medical Release	25	1216	24	1360	28	1567	42	1557	28	1419	24	395
Request Medical Release → Medical Release Returned	29	1044	26	1166	25	1321	27	1281	29	1233	28	353
Medical Release Returned → Request Records from Subject/Provider	7	687	7	802	11	888	17	865	16	775	12	207
Request Records from Subject/Provider → Records Received from Subject/Provider	39	1759	38	1879	35	1906	35	2015	34	1953	39	529
Records Received from Subject/Provider → Complaint to Medical Consultant	15	1617	16	1865	17	1768	21	1798	23	1621	22	457
Complaint to Medical Consultant → Complaint Returned from Medical Consultant	54	1934	54	2120	52	2129	45	2164	36	1935	36	553
Complaint Returned from Medical Consultant → Case Closed/Complaint to Investigation	7	1932	4	2114	5	2126	4	2151	5	1928	5	550
<b>Investigative Processes</b>												
Complaint to Investigation → Complainant Interview Completed	103	349	102	424	110	490	89	531	81	513	91	139
Complainant Interview Completed → Subpoena Served	173	42	237	43	172	44	202	45	155	61	248	22
Complainant Interview Completed → Medical Records Requested with Release	76	141	88	170	59	194	87	203	60	213	86	68
Subpoena Served → All Records Received	124	120	100	178	88	166	82	146	90	151	85	49
Medical Records Requested with Release → All Records Received	95	372	92	406	85	420	64	416	53	418	58	111
All Records Received → Case to Medical Consultant for Review	78	227	84	318	70	369	59	322	50	313	46	99
Case to Medical Consultant for Review → Subject Interview Attempted	110	374	109	488	77	558	76	532	74	477	76	145
Subject Interview Attempted → Subject Interview Completed	66	712	53	880	53	961	51	1046	48	1014	51	252
Subject Interview Completed → Case Sent to Expert Review	97	412	81	511	72	580	57	626	46	614	36	166
Case Sent to Expert Review → Case Back from Expert Review	79	510	72	601	63	658	61	701	61	706	56	183
Case Back from Expert Review → Case Closed or Referred for Action	39	495	31	585	30	656	29	705	33	697	34	181

**Enforcement Data Markers  
All Case Types**

Data represents average days to complete Disciplinary processes for records closed during reported time frames.	FY 2008/2009		FY 2009/2010		FY 2010/2011		FY 2011/2012		FY 2012/2013		FY 2013/2014 1st Qtr	
	Average Days	Number of Records	Average Days	Number of Records	Average Days	Number of Records	Average Days	Number of Records	Average Days	Number of Records	Average Days	Number of Records
Case Referred for Action → Accusation/Petition to Revoke Probation Filed	121	239	113	237	103	219	129	284	108	304	81	73
Accusation/Petition to Revoke Probation Filed → Stipulation Received	330	159	291	173	318	142	329	202	333	198	361	47
Stipulation Received → Mail Vote Sent	6	136	6	132	4	124	5	153	4	141	3	35
Accusation/Petition to Revoke Probation Filed → Date Hearing Closed - Submit to ALJ	416	25	370	30	393	44	318	45	484	55	597	11
Date Hearing Closed - Submit to ALJ → Proposed Decision Received	28	35	98	43	39	58	40	63	50	86	84	15
Proposed Decision Received → Mail Vote Sent	5	54	5	53	6	60	6	72	5	88	4	15
Mail Vote Sent → Case Outcome	131	206	87	208	111	205	82	262	91	265	83	56
Data represents overall average days from Receipt to Closure for records closed during reported time frames.	FY 2008/2009		FY 2009/2010		FY 2010/2011		FY 2011/2012		FY 2012/2013		FY 2013/2014 1st Qtr	
	Average Days	Number of Records	Average Days	Number of Records	Average Days	Number of Records	Average Days	Number of Records	Average Days	Number of Records	Average Days	Number of Records
Complaint Received → Closure in Complaint Unit	84	5278	84	5247	80	5755	91	5687	75	5886	78	1526
Complaint Received → Closure at Field/Referred for Administrative or Criminal Action/Citation Issued	467	1585	464	1747	453	1861	419	2101	404	2143	455	480





**Medical Board of California  
Suspension Orders Issued  
by Suspension Type**

<b>Suspension Order Type</b>	<b>FY 04/05</b>	<b>FY 05/06</b>	<b>FY 06/07</b>	<b>FY 07/08</b>	<b>FY 08/09</b>	<b>FY 09/10</b>	<b>FY 10/11</b>	<b>FY 11/12</b>	<b>FY 12/13</b>	<b>FY 13/14 *</b>
<b>Automatic Suspension Order</b>	5	1	5	0	3	7	4	6	4	3
<b>PC 23 Order</b>	8	4	8	6	15	7	12	12	22	6
<b>Out of State Suspension Order</b>	15	14	8	11	18	18	21	17	9	3
<b>Agreement - No Practice/Restriction</b>	2	6	5	2	3	3	2	0	3	0
<b>Suspension/Cease Practice Issued by Chief</b>	5	5	3	1	2	1	3	4	6	2
<b>Interim Suspension Order</b>	31	32	22	18	22	22	28	35	34	11
<b>Temporary Suspension Order</b>	1	0	0	1	0	0	1	0	0	0
<b>Totals</b>	<b>67</b>	<b>62</b>	<b>51</b>	<b>39</b>	<b>63</b>	<b>58</b>	<b>71</b>	<b>74</b>	<b>78</b>	<b>25</b>

\* Suspensions Issued through 9/30/2013

# ENFORCEMENT TIMEFRAMES

Attachment B

FISCAL YEARS	2007 - 2008		2008 - 2009		2009 - 2010		2010 - 2011		2011 - 2012		2012 - 2013		2013 - 2014 *	
	AVERAGE	MEDIAN	AVERAGE	MEDIAN	AVERAGE	MEDIAN	AVERAGE	MEDIAN	AVERAGE	MEDIAN	AVERAGE	MEDIAN	AVERAGE	MEDIAN
COMPLAINT PROCESSING	61	49	75	63	76	63	74	77	83	64	68	54	71	59
INVESTIGATION	324	272	349	309	328	292	312	283	264	225	267	244	291	273
TOTAL MBC														
DAYS	385	321	424	372	404	355	386	360	347	289	335	298	362	332
YEARS	1.05	0.88	1.16	1.02	1.11	0.97	1.06	0.99	0.95	0.79	0.92	0.82	0.99	0.91
AG PREP FOR ACC	121	58	103	63	106	66	107	72	104	78	90	75	118	99
OTHER LEGAL	471	324	381	311	368	312	417	324	396	351	434	360	479	432
TOTAL AG														
DAYS	592	382	484	374	474	378	524	396	500	429	524	435	597	531
YEARS	1.62	1.05	1.33	1.02	1.30	1.04	1.44	1.08	1.37	1.18	1.44	1.19	1.64	1.45
TOTAL MBC & AG														
DAYS	977	703	908	746	878	733	910	756	847	718	859	733	959	863
YEARS	2.68	1.93	2.49	2.04	2.41	2.01	2.49	2.07	2.32	1.97	2.35	2.01	2.63	2.36

Years calculated using 365 days per year

Data source: MBC Annual Reports, except 2012-2013

\* Data through 9/30/2013

Medical Board of California  
Investigation Prosecution Timeframes\*

	2005	2006		2007		2008		2009		2010		2011	2012	2013 Qtr 1	2013 Qtr 2	2013 Qtr 3
	Prior to VE	All	VE	All	VE	All	VE	All	VE	All	VE	All	All	All	All	All
<b>Calendar Day Age from Case Assigned to Case Closed Not Resulting in Prosecution</b>																
Average	271	299	138	330	268	374	358	383	381	333	333	296	263	266	269	274
Median	252	285	134	304	269	335	324	346	346	298	297	273	230	246	255	567
Record Count	827	703	192	648	539	609	588	673	672	664	663	857	794	222	201	225
<b>Calendar Day Age from Request to Suspension Order Granted</b>																
Average	51	44	4	34	38	19	19	52	39	40	40	43	73	33	36	40
Median	17	3	2	22	23	10	10	23	23	1	1	17	24	29	33	26
Record Count	24	21	11	17	13	21	17	17	16	27	27	31	51	9	12	15
<b>Calendar Day Age from Request to Receipt of Medical Records</b>																
Average	58	53	37	59	57	63	58	73	73	64	64	67	46	69	44	51
Median	32	31	26	31	31	28	28	32	32	29	29	30	28	34	29	35
Record Count	475	376	228	264	259	256	252	243	243	257	257	246	236	46	44	32
<b>Calendar Day Age from Request to Physician Interview Completed</b>																
Average	48	51	43	52	50	63	63	52	52	46	46	52	47	48	39	43
Median	36	42	38	37	36	41	42	37	37	34	34	38	35	37	31	28
Record Count	597	453	172	406	371	473	466	696	696	582	582	729	664	145	136	103
<b>Calendar Day Age from Request to Receipt of Expert Opinion</b>																
Average	51	47	35	51	43	50	50	48	48	47	47	58	57	47	48	66
Median	41	35	31	36	35	39	38	36	35	37	37	39	38	36	36	42
Record Count	519	424	82	344	270	374	359	426	424	415	415	599	447	142	151	122
<b>Calendar Day Age from Case Assigned to Completed Investigation and Accusation Filed</b>																
Average	556	554	140	543	340	565	493	584	578	589	588	552	495	558	499	494
Median	525	504	120	523	339	541	486	575	569	616	616	533	457	530	469	455
Record Count	187	149	17	198	95	157	131	189	186	200	199	239	231	54	65	54
<b>Calendar Day Age from Accusation Filed to Disciplinary Outcome**</b>																
Average	608	602	85	576	188	561	243	473	339	426	340	425	449	459	476	476
Median	526	466	99	426	182	384	238	351	309	326	304	391	367	422	440	457
Record Count	212	195	3	226	29	203	80	198	145	171	156	190	237	51	59	63

\*Excludes Out of State and Headquarters Cases

\*\*Excludes Outcomes where no Accusation Filed

Medical Board of California  
Citations Issued & Civil Actions Filed by Calendar Year

Attachment B

	2005	2006	2007	2008	2009	2010	2011	2012	2013 Qtr 1	2013 Qtr 2	2013 Qtr 3
<b>*Citations Issued</b>	80	81	76	109	124	100	98	122	21	19	19
Citations Issued for Failure to Produce Records	0	6	3	3	2	5	6	3	3	0	2
<b>Civil Actions Filed</b>	3	3	1	1	2	1	6	0	0	0	0
Civil Actions Filed for Failure to Produce Records	2	2	1	1	0	0	3	0	0	0	0

\*Excludes citations issued for failure to comply with CME audit and for failure to notify Board of change of address

**MEDICAL BOARD OF CALIFORNIA**  
**Enforcement Processing Timeframes**  
**2012 Strategic Plan Objective 5.2**

Attachment B

Enforcement Process	2008/2009		2009/2010		2010/2011		2011/2012		2012/2013		2013/2014 Qtr 1	
	Cases <sup>1</sup>	AVG <sup>2</sup>	Cases	AVG	Cases	AVG	Cases	AVG	Cases	AVG	Cases	AVG
Complaint	6426	75	6563	76	7008	74	7217	83	7408	67	1865	70
<b>% of Complaints Below 50 days (Goal: 50-60%)</b>	<b>43%</b>		<b>41%</b>		<b>35%</b>		<b>42%</b>		<b>48%</b>		<b>45%</b>	
Investigation	1100	349	1290	328	1411	312	1545	264	1551	267	360	290
Discipline												
AG Processing to Preparation of an Accusation	240	103	304	106	294	107	333	103	298	90	58	116
Other Stages of the Legal Process (e.g., after charges filed)	228	381	232	368	216	417	280	396	293	434	69	479

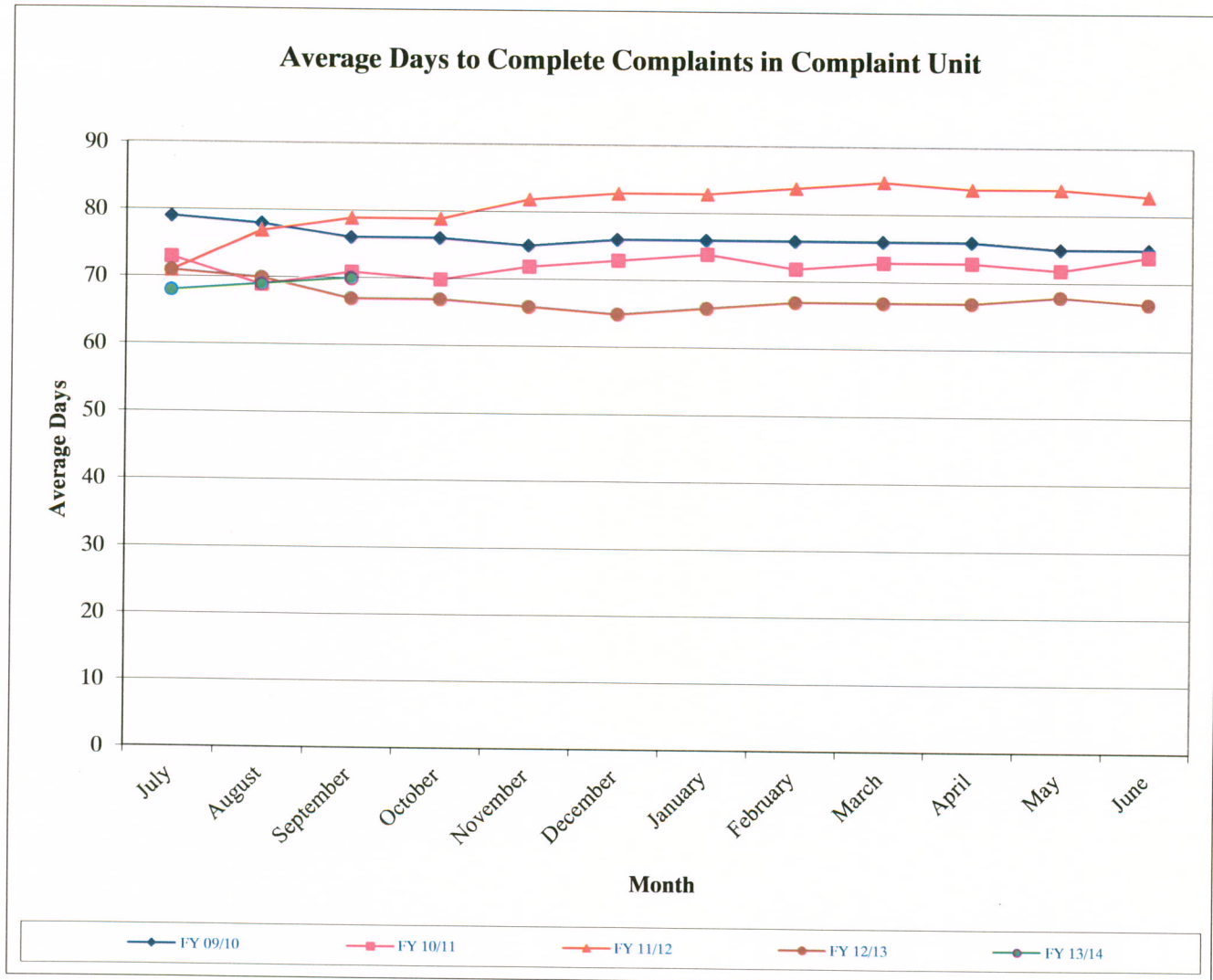
<sup>1</sup> Some cases closed were opened in a prior fiscal year.

**(Footnote applies to all years provided on report)**

<sup>2</sup> Average time (calendar days) in processing complaints during the fiscal year, for all cases, from date of original receipt of the complaint, for each stage of discipline, through completion of judicial review. **(Footnote applies to all years provided on report)**

**Medical Board of California Enforcement Program**  
**Average Days to Complete Complaint in Complaint Unit**

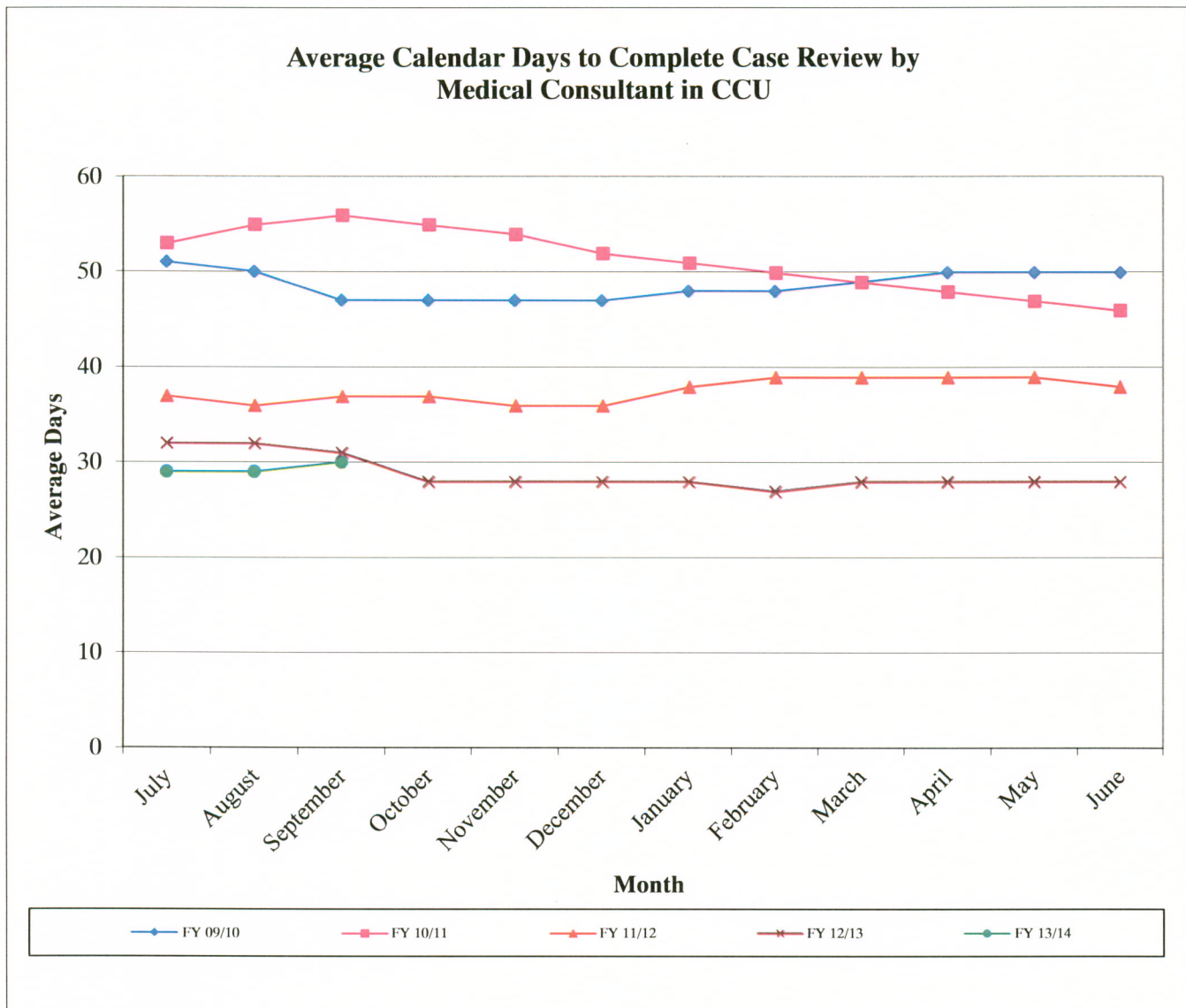
Month	FY 09/10	FY 10/11	FY 11/12	FY 12/13	FY 13/14
July	79	73	71	71	68
August	78	69	77	70	69
September	76	71	79	67	70
October	76	70	79	67	
November	75	72	82	66	
December	76	73	83	65	
January	76	74	83	66	
February	76	72	84	67	
March	76	73	85	67	
April	76	73	84	67	
May	75	72	84	68	
June	75	74	83	67	



Average Days to Complete Complaints in Complaint Unit includes complaints resolved by Complaint Unit and Complaint Unit processing days for cases completed at field investigation.

**Medical Board of California Enforcement Program**  
**Average Calendar Days to Complete Case Review by Medical Consultant in CCU**

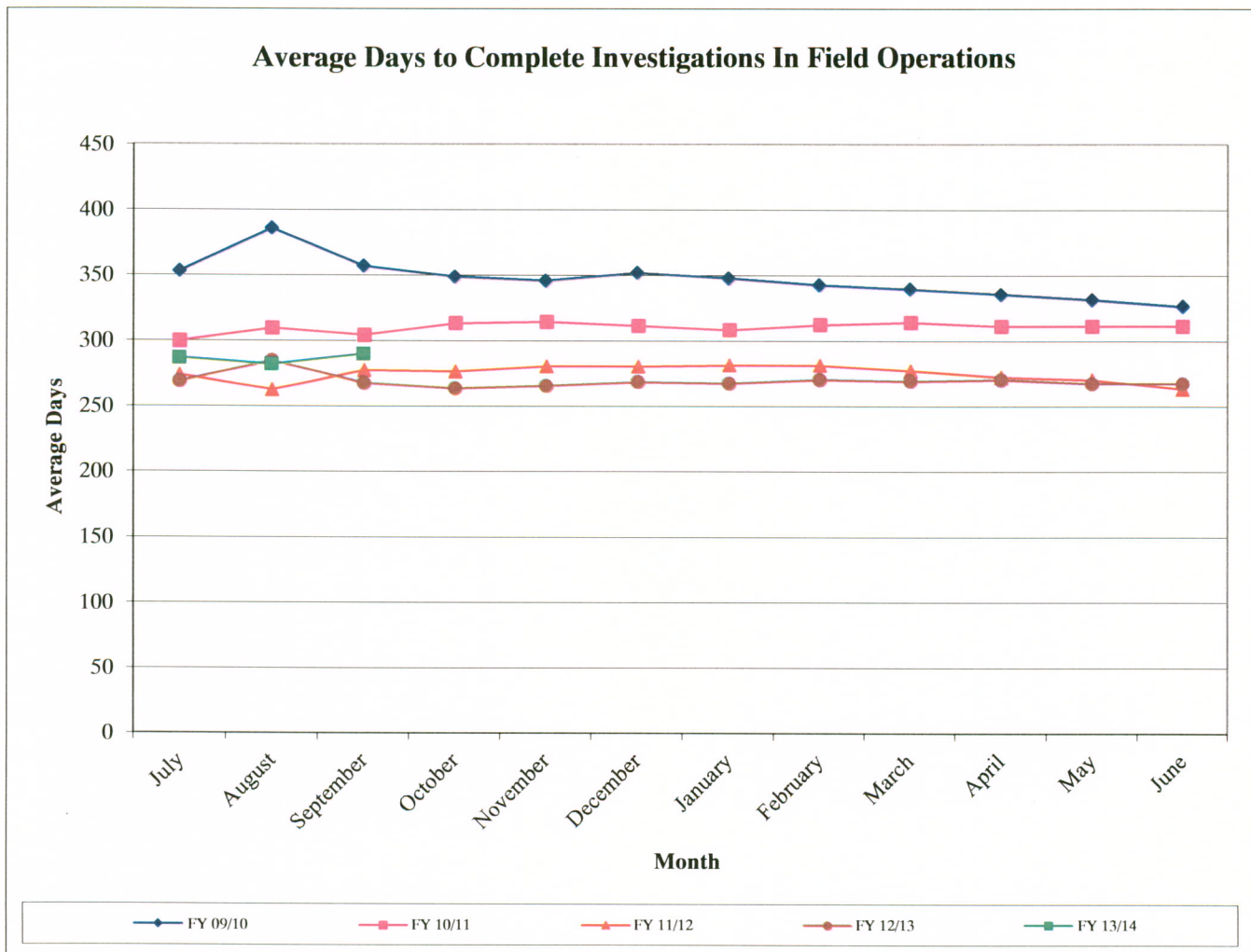
Month	FY 09/10	FY 10/11	FY 11/12	FY 12/13	FY 13/14
July	51	53	37	32	29
August	50	55	36	32	29
September	47	56	37	31	30
October	47	55	37	28	
November	47	54	36	28	
December	47	52	36	28	
January	48	51	38	28	
February	48	50	39	27	
March	49	49	39	28	
April	50	48	39	28	
May	50	47	39	28	
June	50	46	38	28	





## Medical Board of California Enforcement Program Average Days to Complete Investigations in Field Operations

Month	Fiscal Year				
	FY 09/10	FY 10/11	FY 11/12	FY 12/13	FY 13/14
July	353	300	274	269	287
August	386	310	263	285	282
September	357	305	278	268	290
October	349	314	277	264	
November	346	315	281	266	
December	352	312	281	269	
January	348	309	282	268	
February	343	313	282	271	
March	340	315	278	270	
April	336	312	273	271	
May	332	312	271	268	
June	327	312	264	268	



Investigation processing days are from the date case was sent to field investigation by Complaint Unit until closure or referral (does not include Complaint Unit processing days for complaints completed at field investigation).