

WORKLOAD REPORT as of December 31, 2012

CONSUMER INFORMATION UNIT FY 12/13					
	FY 12/13	Q1	Q2	Q3	Q4
Total Calls Answered	46,600	26,022	20,578		
Calls Requesting Call Back	5,366	2,850	2,516		
Calls Abandoned	5,238	3,071	2,167		
Address Changes Completed	3,419	2,046	1,373		

CONSUMER INFORMATION UNIT FY 11/12					
	FY 11/12	Q1	Q2	Q3	Q4
Total Calls Answered	89,497	15,725	20,456	28,061	25,255
Calls Requesting Call Back	14,923	4,647	5,022	3,229	2,025
Calls Abandoned	13,448	4,356	4,616	2,657	1,819
Address Changes Completed	8,894	3,451	2,133	1,909	1,401

PHYSICIAN & SURGEON DATA FY 12/13					
	FY 11/12	Q1	Q2	Q3	Q4
Applications Received	3,437	1,722	1,715		
Initial Reviews Completed	3,347	1,556	1,791		
Total Pending	N/A	3,907	4,244		
Reviewed	N/A	3,365	3,770		
Not Reviewed	N/A	542	474		
(SR2s Pending)	N/A	93	88		
Licenses Issued	2,711	1,447	1,264		
Renewals Issued	31,112	16,282	14,830		

PHYSICIAN & SURGEON DATA FY 11/12					
	FY 11/12	Q1	Q2	Q3	Q4
Applications Received	6,629	1,711	1,666	1,862	1,390
Initial Reviews Completed	6,729	1,491	1,689	1,979	1,570
Total Pending	N/A	4,012	4,325	4,515	3,823
Reviewed	N/A	3,273	3,530	3,928	3,423
Not Reviewed	N/A	739	795	587	400
(SR2s Pending)	N/A	108	121	124	109
Licenses Issued	5,351	1,358	1,203	1,419	1,371
Renewals Issued	64,351	16,092	14,067	17,835	16,357

SPECIALTY BOARD APPLICATIONS FY 12/13					
	FY 12/13	Q1	Q2	Q3	Q4
Applications Received	0	0	0		
Applications Pending	N/A	1	1		

SPECIALTY BOARD APPLICATIONS FY 11/12					
	FY 11/12	Q1	Q2	Q3	Q4
Applications Received	0	0	0	0	0
Applications Pending	N/A	1	1	1	1

SR 2 - CATEGORIES FY 12/13

	FY 12/13	Q1	Q2	Q3	Q4
Alcohol/Drugs	14	5	9		
PG/Medical Knowledge	44	25	19		
Convictions	20	15	5		
Other	30	11	19		

SR 2 - CATEGORIES FY 11/12

	FY 11/12	Q1	Q2	Q3	Q4
Alcohol/Drugs	86	30	12	27	17
PG/Medical Knowledge	188	59	40	60	29
Convictions	100	43	18	16	23
Other	179	92	44	21	22

INTERNATIONAL MEDICAL SCHOOL APPLICATIONS FY 12/13

	FY 12/13	Q1	Q2	Q3	Q4
Schools Pending Recognition at Beginning of Quarter	N/A	101	98		
Pending Self-Assessment Reports (included above)	N/A	7	9		
New Self-Assessment Reports Received	2	0	2		
New Unrecognized Schools Received	51	27	24		
School Recognized Pursuant to CCR 1314(a)(1)	63	30	33		
School Recognized Pursuant to CCR 1314(a)(2)	0	0	0		
TOTAL Schools Pending Recognition at End of Quarter	N/A	98	94		

INTERNATIONAL MEDICAL SCHOOL APPLICATIONS FY 11/12

	FY 11/12	Q1	Q2	Q3	Q4
Schools Pending Recognition at Beginning of Quarter	N/A	43	62	75	90
Pending Self-Assessment Reports (included above)	N/A	3	5	6	7
New Self-Assessment Reports Received	4	2	0	1	1
New Unrecognized Schools Received	102	22	15	18	47
School Recognized Pursuant to CCR 1314(a)(1)	47	4	2	4	37
School Recognized Pursuant to CCR 1314(a)(2)	1	1	0	0	0
TOTAL Schools Pending Recognition at End of Quarter	N/A	62	75	90	101

RESEARCH PSYCHOANALYST FY 12/13

	FY 12/13	Q1	Q2	Q3	Q4
RP Applications Received	4	4	0		
RP Licenses Issued	3	2	1		

RESEARCH PSYCHOANALYST FY 11/12

	FY 11/12	Q1	Q2	Q3	Q4
RP Applications Received	2	1	0	1	0
RP Licenses Issued	4	3	0	0	1

WORKLOAD REPORT as of December 31, 2012

LICENSED MIDWIVES FY 12/13					
	FY 12/13	Q1	Q2	Q3	Q4
Applications Received	20	8	12		
Applications Pending	N/A	5	6		
Licenses Issued	17	5	12		
Licenses Renewed	63	31	32		

LICENSED MIDWIVES FY 11/12					
	FY 11/12	Q1	Q2	Q3	Q4
Applications Received	33	9	5	13	6
Applications Pending	N/A	6	3	5	4
Licenses Issued	31	4	8	10	9
Licenses Renewed	125	24	31	33	37

FICTITIOUS NAME PERMITS FY 12/13					
	FY 12/13	Q1	Q2	Q3	Q4
P&S - FNP Received	593	363	230		
P&S - FNP Issued	627	284	343		
P&S - FNP Pending	N/A	55	116		
P&S - FNP Due Diligence	645	544	101		
Podiatric FNP Received	10	6	4		
Podiatric FNP Issued	13	6	7		
Podiatric FNP Pending	N/A	18	8		
Podiatric FNP Due Diligence	22	14	8		

FICTITIOUS NAME PERMITS FY 11/12					
	FY 11/12	Q1	Q2	Q3	Q4
P&S - FNP Issued	1,397	384	380	315	318
P&S - FNP Pending	N/A	59	63	72	94
Podiatric FNP Issued	23	3	9	7	4
Podiatric FNP Pending	N/A	0	0	0	2

OPTICAL REGISTRATIONS FY 12/13					
	FY 12/13	Q1	Q2	Q3	Q4
RDO - Business Registrations Issued	9	0	9		
RDO - Pending Applications Business	N/A	1	20		
CLS - Out-of-State - Business Registrations Issued	0	0	0		
CLS - Pending Out of State Applications -Business	N/A	1	1		
Spectacle Lens Registrations Issued	98	66	32		
Spectacle Lens - Pending Applications	N/A	59	24		
Contact Lens Registrations Issued	47	33	14		
Contact Lens - Pending Applications	N/A	20	7		
Spectacle Lens Registrations Renewed	442	230	212		
Contact Lens Registrations Renewed	204	94	110		

OPTICAL REGISTRATIONS FY 11/12					
	FY 11/12	Q1	Q2	Q3	Q4
Business Registrations Issued	48	10	9	8	21
Pending Applications Business	N/A	30	30	18	23
Out-of-State Business Registrations Issued	1	0	0	0	1
Pending Applications Out of State Bus.	N/A	0	0	0	1
Spectacle Lens Registrations Issued	192	47	29	72	44
Pending Applications-Spectacle Lens	N/A	78	107	29	57
Contact Lens Registrations Issued	85	13	11	43	18
Pending Applications-Contact Lens	N/A	22	33	15	18
Spectacle Lens Registrations Renewed	991	216	217	276	282
Contact Lens Registrations Renewed	420	95	79	112	134

POLYSOM FY 12/13					
	FY 12/13	Q1	Q2	Q3	Q4
Polysomnographic Trainee Applications Received	11	2	9		
Polysomnographic Trainee Registrations Pending	11	2	9		
Polysomnographic Trainee Registrations Issued	6	0	6		
Polysomnographic Technician Applications Received	88	20	68		
Polysomnographic Technician Registrations Pending	54	21	33		
Polysomnographic Technician Registrations Issued	25	0	25		
Polysomnographic Technologist Applications Received	495	168	327		
Polysomnographic Technologist Applications Pending	338	208	130		
Polysomnographic Technologist Registrations Issued	197	0	197		

POLYSOM FY 11/12 **					
	FY 11/12	Q1	Q2	Q3	Q4
Polysomnographic Trainee Applications Received	0	0	0	0	0
Polysomnographic Technician Applications Received	1	0	0	0	1
Polysomnographic Technologist Applications Received	29	0	0	0	29

** Program began accepting applications April of 2012

SPECIAL PROGRAMS
FY 12/13

Permit	Applications Received				Applications Reviewed				Permits Issued				Permits Renewed				Total Pending				Applications Withdrawn or Denied			
	Q1	Q2	Q3	Q4	Q1	Q2	Q3	Q4	Q1	Q2	Q3	Q4	Q1	Q2	Q3	Q4	Q1	Q2	Q3	Q4	Q1	Q2	Q3	Q4
2111	11	12			10	14			6	9			2	3			21	10			0	0		
2112	0	1			0	1			0	2			0	0			1	0			0	0		
2113	7	4			8	2			2	3			10	13			20	9			0	0		
2168	0	0			0	0			2	1			3	2			1	0			0	0		
2072	0	0			0	0			0	0			0	0			0	0			0	0		
1327	0	0			0	0			0	0			0	1			0	0			0	0		

SPECIAL PROGRAMS
FY 11/12

Permit	Applications Received				Applications Reviewed				Permits Issued				Permits Renewed				Total Pending				Applications Withdrawn or Denied			
	Q1	Q2	Q3	Q4	Q1	Q2	Q3	Q4	Q1	Q2	Q3	Q4	Q1	Q2	Q3	Q4	Q1	Q2	Q3	Q4	Q1	Q2	Q3	Q4
2111	8	2	3	11	9	5	3	9	3	7	2	5	5	2	3	3	10	15	10	16	0	0	1	0
2112	0	0	0	1	0	0	0	1	1	0	0	1	0	0	0	0	1	1	1	1	0	0	0	0
2113	5	6	9	6	5	8	9	6	14	4	4	7	6	11	14	7	8	10	14	13	0	0	1	0
2168	3	0	1	1	1	1	1	1	0	2	0	0	3	0	1	1	3	1	2	3	0	0	0	0
2072	0	0	0	0	0	0	0	0	0	0	0	0	0	0	0	0	0	0	0	0	0	0	0	0
1327	0	0	0	0	0	0	0	0	0	0	0	0	1	1	0	0	0	0	0	0	0	0	0	0

2111 - Visiting Fellow (doesn't satisfy postgraduate training required for licensure)

2112 - Hospital Fellowship Program Non-Citizen (does not satisfy postgraduate training required for licensure)

2113 - Medical School Faculty Member (may satisfy postgraduate training required for licensure)

2168 - Special Faculty Permit (academically eminent; unrestricted practice within sponsoring medical school - not eligible for licensure)

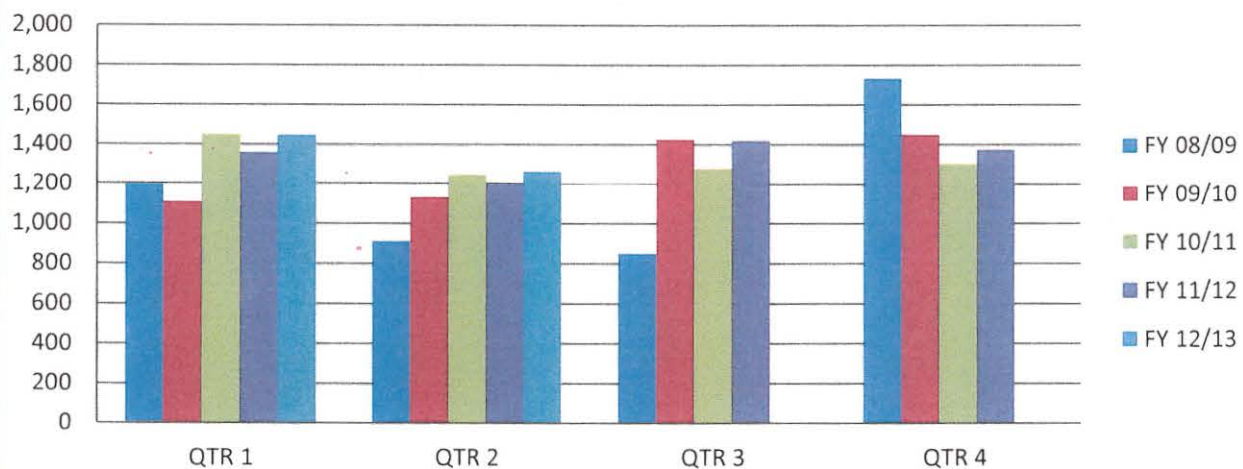
2072 - Special Permit - Correctional Facility

1327 - Medical Student Rotations - Non-ACGME Hospital Rotation

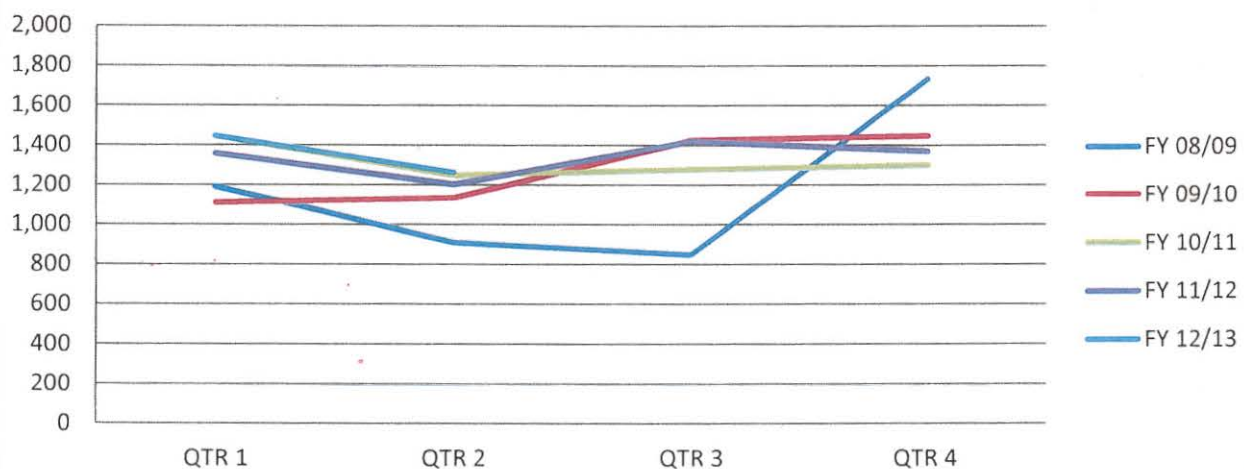
PHYSICIAN'S AND SURGEON'S LICENSES ISSUED
Five Fiscal Year History

Fiscal Year	QTR 1	QTR 2	QTR 3	QTR 4	TOTAL
FY 12/13	1,447	1,264			2,711
FY 11/12	1,358	1,203	1,419	1,371	5,351
FY 10/11	1,447	1,248	1,277	1,300	5,272
FY 09/10	1,107	1,132	1,424	1,447	5,110
FY 08/09	1,192	912	849	1,735	4,688

LICENSES ISSUED



LICENSES ISSUED

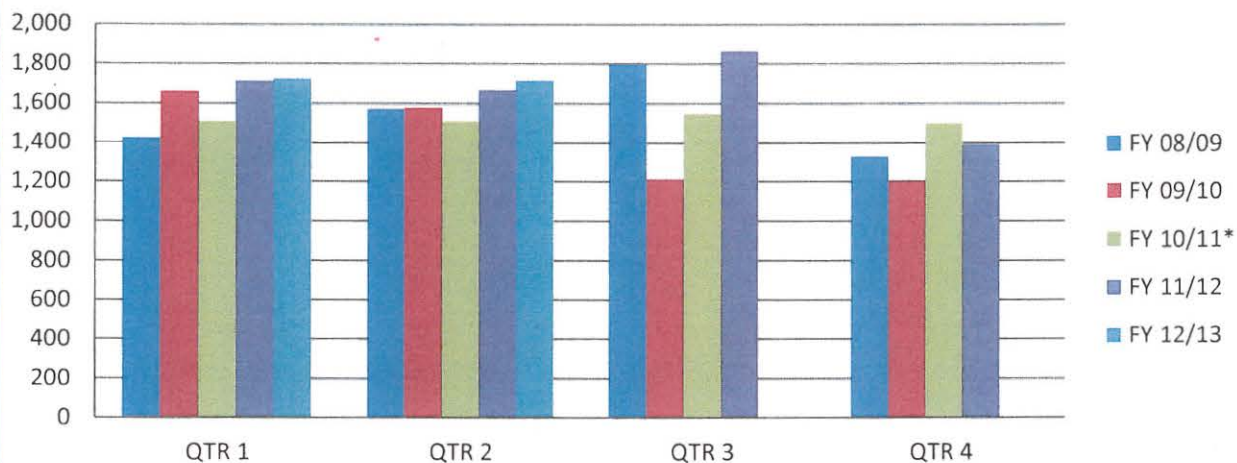


***PHYSICIAN'S AND SURGEON'S LICENSE AND PTAL APPLICATIONS RECEIVED**
Five Fiscal Year History

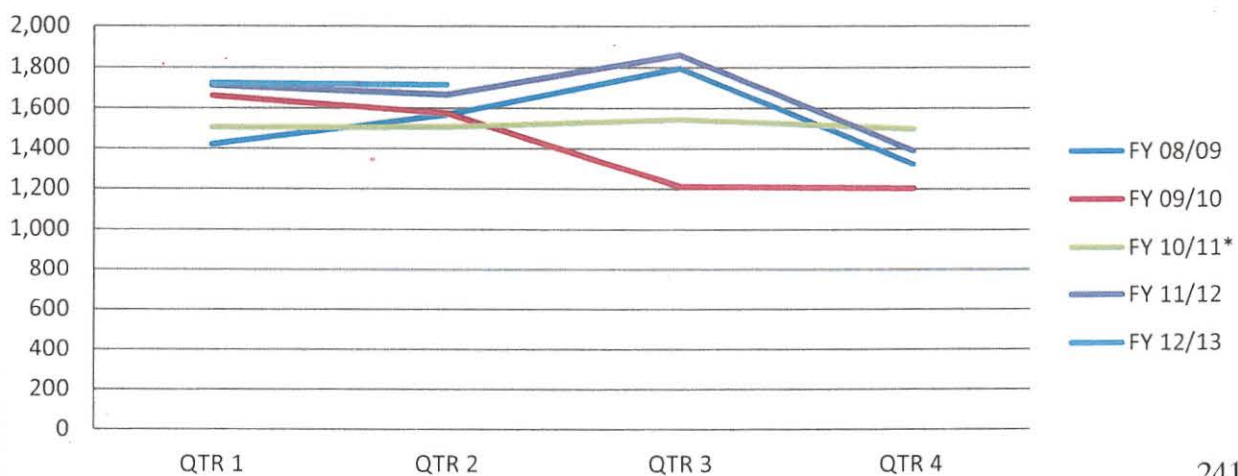
Fiscal Year	QTR 1	QTR 2	QTR 3	QTR 4	TOTAL
FY 12/13	1,722	1,715			3,437
FY 11/12	1,711	1,666	1,862	1,390	6,629
FY 10/11*	1,503	1,505	1,543	1,496	6,047
FY 09/10	1,658	1,573	1,211	1,203	5,645
FY 08/09	1,420	1,568	1,794	1,325	6,107

* Applications Received Total and Q4 numbers have been corrected to match the FY 10/11 Annual Report. Previous Reported as: Total 5,914 and Q4 as 1,363 in July 2011 Board Meeting Packet.

P&S APPLICATIONS RECEIVED



P&S APPLICATIONS RECEIVED



WORKLOAD REPORT **as of December 31, 2012**

Fiscal Year - 2012/2013

Strategic Plan Goal 5: Organizational Effectiveness Objective 5.1: Licensing Applications to be Reviewed Within 45 Days					
	FY 12/13	Q1	Q2	Q3	Q4
Number of Weeks 45 Day Initial Review Goal Not Met	0	0	0		
Number of Weeks Per Quarter / Total Weeks	26	13	13		
Highest # of Days Initial Review Goal Exceeded	N/A	0	0		

Fiscal Year - 2011/2012

Strategic Plan Goal 5: Organizational Effectiveness Objective 5.1: Licensing Applications to be Reviewed Within 45 Days					
	FY 11/12	Q1	Q2	Q3	Q4
Number of Weeks 45 Day Initial Review Goal Not Met	9	1	6	2	0
Number of Weeks Per Quarter / Total Weeks	52	13	13	13	13
Highest # of Days Initial Review Goal Exceeded	N/A	3	7	5	0

PHYSICIAN'S AND SURGEON'S
APPLICATIONS RECEIVED AND LICENSES ISSUED
Fiscal Year - 2012/2013

2012 - 2013 -->	Applications Received (License & PTAL)					Percentage				
	Q1	Q2	Q3	Q4	Total	Q1	Q2	Q3	Q4	Total
US/CAN	975	1,165			2,140	56.62%	67.93%			62.26%
IMG - License	269	270			539	15.62%	15.74%			15.68%
IMG - PTAL	478	280			758	27.76%	16.33%			22.05%
TOTAL	1,722	1,715	0	0	3,437	100.00%	100.00%	0.00%	0.00%	100.00%

2012 - 2013 -->	Licenses & PTAL Issued					Percentage				
	Q1	Q2	Q3	Q4	Total	Q1	Q2	Q3	Q4	Total
US/CAN	1,037	953			1,990	71.67%	75.40%			73.40%
IMG - License	239	198			437	16.52%	15.66%			16.12%
PTAL - License	171	113			284	11.82%	8.94%			10.48%
TOTAL	1,447	1,264	0	0	2,711	100.00%	100.00%			100.00%
Total PTAL Issued	427	326			753					

Fiscal Year - 2011/2012

2011 - 2012 -->	Applications Received (License & PTAL)					Percentage				
	Q1	Q2	Q3	Q4	Total	Q1	Q2	Q3	Q4	Total
US/CAN	984	1,196	1,300	794	4,274	57.51%	71.79%	69.82%	57.12%	64.47%
IMG - License	271	243	337	352	1,203	15.84%	14.59%	18.10%	25.32%	18.15%
IMG - PTAL	456	227	225	244	1,152	26.65%	13.63%	12.08%	17.55%	17.38%
TOTAL	1,711	1,666	1,862	1,390	6,629	100.00%	100.00%	100.00%	100.00%	100.00%

2011 - 2012 -->	Licenses & PTAL Issued					Percentage				
	Q1	Q2	Q3	Q4	Total	Q1	Q2	Q3	Q4	Total
US/CAN	969	888	1,131	1,023	4,011	71.35%	73.82%	79.70%	74.62%	74.96%
IMG - License	389	315	288	348	1,340	28.65%	26.18%	20.30%	25.38%	25.04%
TOTAL	1,358	1,203	1,419	1,371	5,351	100.00%	100.00%	100.00%	100.00%	100.00%
Total PTAL Issued	338	349	204	324	1,215					