

# Introduction to the UCSD Physician Assessment and Clinical Education (PACE) CME Programs

## MBC Quarterly Meeting – San Diego

### 26 Oct 2012

William A. Norcross, M.D.

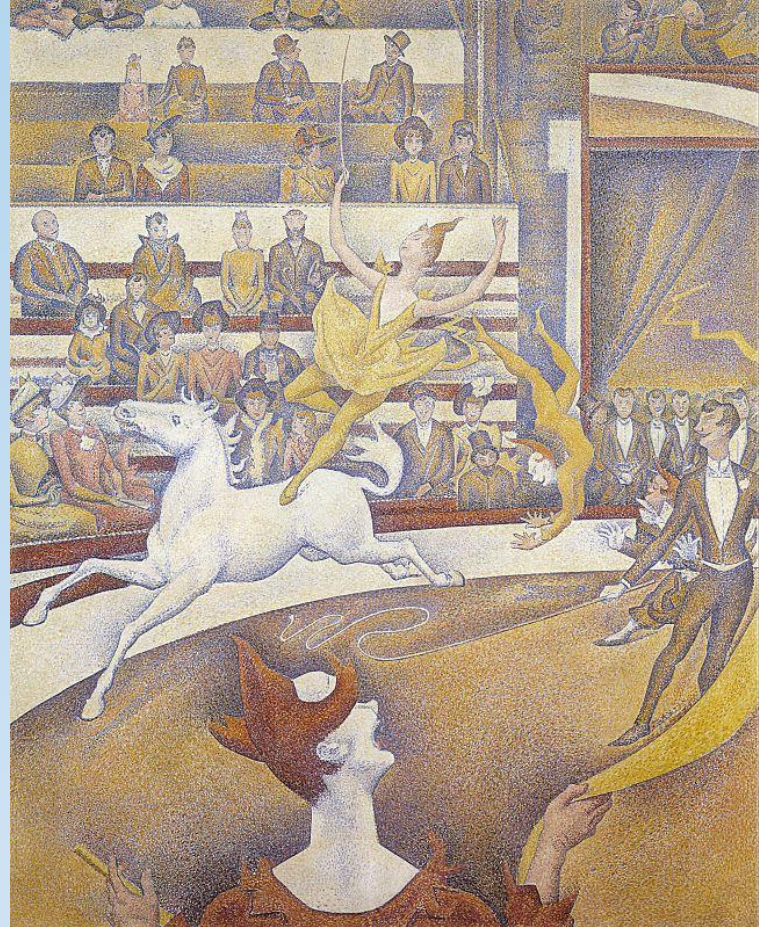
David E.J. Bazzo, M.D.

UCSD Physician Assessment and Clinical Education (PACE) Program



**UC San Diego**  
SCHOOL OF MEDICINE

# PACE Continuing Medical Education (CME)



# **PACE CME programs**

**(to address identified deficiencies)**

- Prescribing
- Medical Record Keeping
- Professional Boundaries
- Anger Management
  - With optional follow-up intervention
- Physician-Patient Communication
- PACE Law and Medicine Program
- IMQ-PACE Physician Leadership



# PACE Customized CME

- Wrong-site surgery
- Utilization management
- Supervision of physician assistants
- Billing and coding compliance
- Informed consent
- Critical thinking in clinical medicine





## PACE Group Instruction CME

- PACE CPD programs are small-group and interactive (The preferred adult learning model)
- All PACE CPD programs are subjected to ongoing evaluation in order to demonstrate acquisition of new knowledge (Pre- and Post-Tests for all participants)
- Attendance and participation in all PACE CPD programs is mandatory for issuance of certification of completion



## PACE CME Follow-up

- All PACE CPD programs are studied in perpetuity in an effort to evaluate to what degree our participants demonstrate improved knowledge or clinical behavior. This data also enables us to continuously improve the quality of our programs.
- Participant complete a “Commitment to Change” form at the completion of courses (a pledge to change behavior as a result of new knowledge obtained)
- Participant receive a 3 month post course survey to document adherence to their committed change.





courtesy of [www.georgesseurat.org](http://www.georgesseurat.org)



## PACE Prescribing (2.5 days)

- Controlled substances: State laws and MBC guidelines
- Managing the “difficult” patient
- Management of chronic pain
- Pharmacology of controlled substances; drug side effects and interactions
- Charting issues in prescribing





# PACE Medical Records (2 days)

- The law and the medical record
- Documentation and risk management
- Coding and billing compliance
- HIPAA
- The electronic medical record
- Chart review workshop (of both clinical entries and billing records)



## PACE Professional Boundaries (3 days)

- Increasing insight, developing empathy for the victims, changing attitudes
- Intensive, very small group (<8)
- Psychodrama, role-playing
- Values and boundary clarification
- Improves coping skills; teaches good behavioral responses to difficult situations



# PACE Anger Management (3 days)

- Small group (<12), intensive
- Learn and practice cognitive and behavioral strategies to manage anger
- De-escalation techniques
- Healthy conflict resolution
- Mindfulness
- Self care



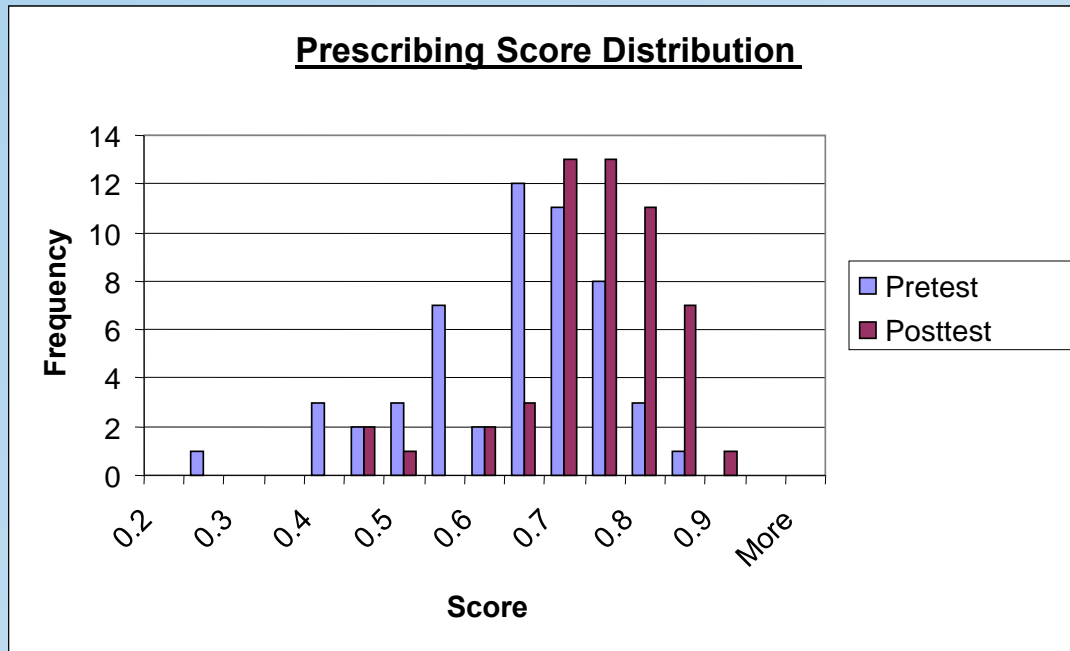
## PACE Anger Management Follow-up

- A coaching/mentoring program to increase the likelihood of sustained success in behavioral change for the participant
- Program Elements:
  - 360° Survey
  - 7 coaching sessions
  - Summary report
  - Creation of a behavioral contract-action plan (optional)

# PACE Communications (1 day)

- Based on Institute for Healthcare Communications training
- Teach and practice communication skills individually and in teams
- Analysis of videotaped interactions for effective and ineffective techniques
- Greater involvement of the patient in decision-making

# Prescribing Course Pre/Post Test Results: PACE docs

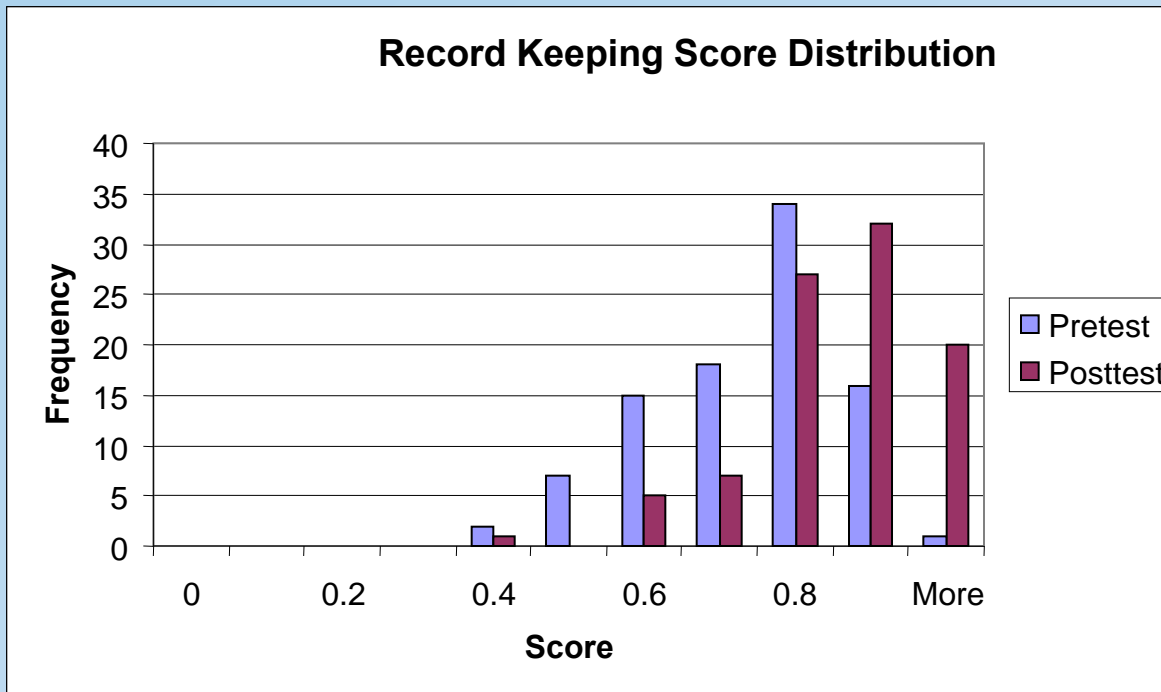


- Note.  $N = 53$ ,  
 $\text{Mean}_{\text{pre}} = 61\%$ ;  
 $\text{Mean}_{\text{post}} = 72\%$
- pre-post  
difference,  
 $p < .001$



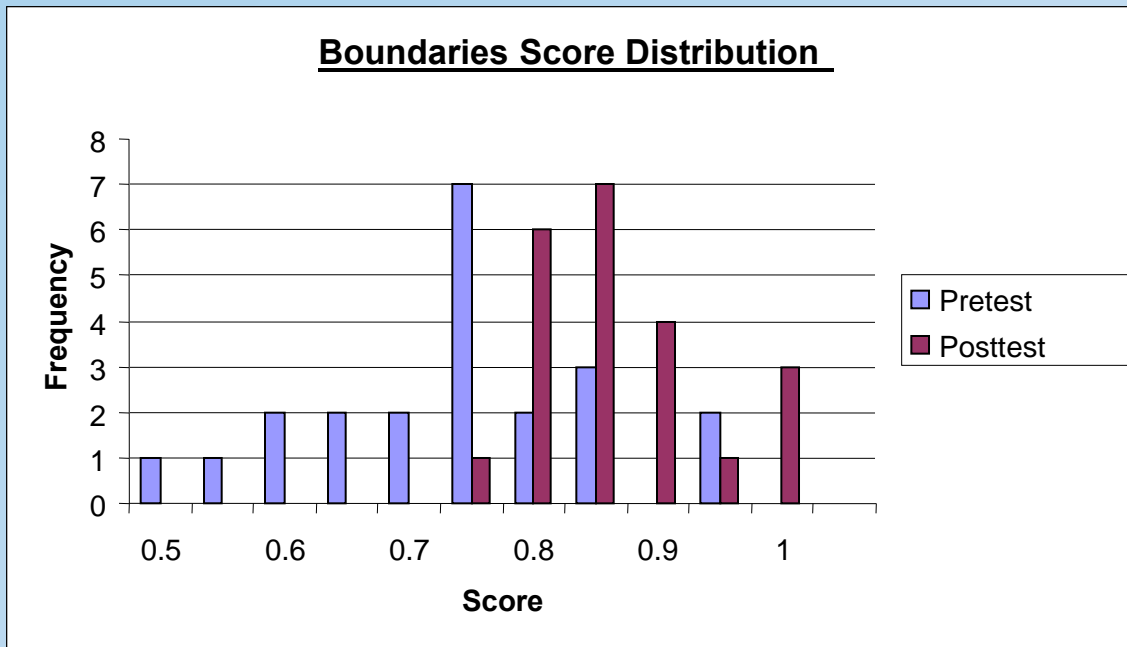
# Medical Record Keeping Course

## Pre/Post Test Results: PACE docs



- Note.  $N = 92$ ,  
 $\text{Mean}_{\text{pre}} = 71\%$ ;  
 $\text{Mean}_{\text{post}} = 82\%$
- pre-post  
difference,  
 $p < .001$

## Boundaries Course Pre/Post Test Results: PACE docs



- Note.  $N = 22$ ,  
 $\text{Mean}_{\text{pre}} = 71\%$ ;  
 $\text{Mean}_{\text{post}} = 85\%$
- pre-post  
difference,  
 $p < .001$

# MET Building





# Ethics Education (IMQ)

- IMQ Ethics and Professionalism for Physicians Program
  - [imq.org](http://imq.org)



the  
Institute for Medical Quality





[paceprogram.ucsd.edu](http://paceprogram.ucsd.edu)



UC San Diego  

---

SCHOOL OF MEDICINE

90.19

UC San Diego  

---

PACE PROGRAM